

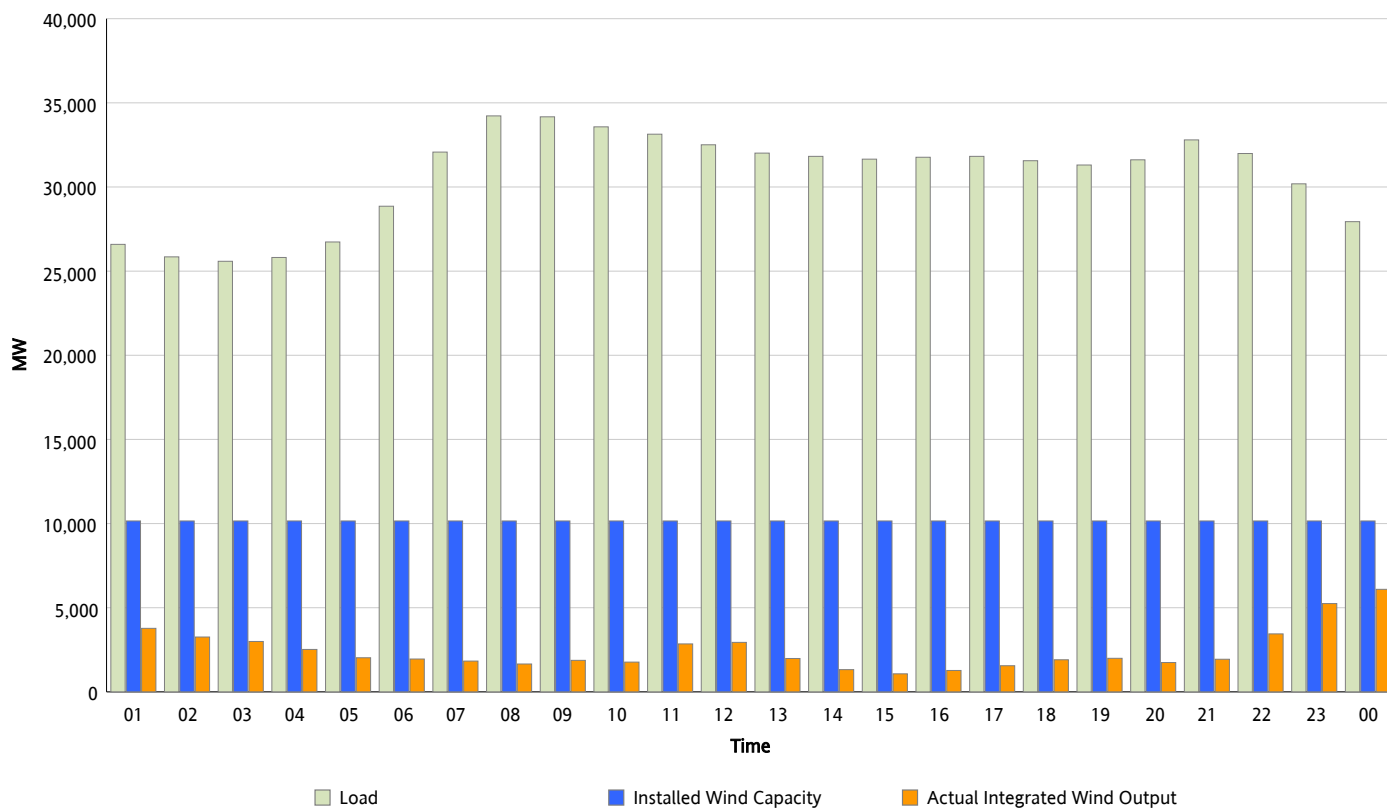


## ERCOT Grid Operations

### Wind Integration Report : 03/13/2013

Peak Load	34,227 MW
Load Peak Hour (HE)	08
Wind Over Peak	1,657 MW
Wind Record 02/09/13	9,481 MW
Max Wind Value*	6,337 MW
Wind Peak Time	23:46
Wind Integration %	23.21 %

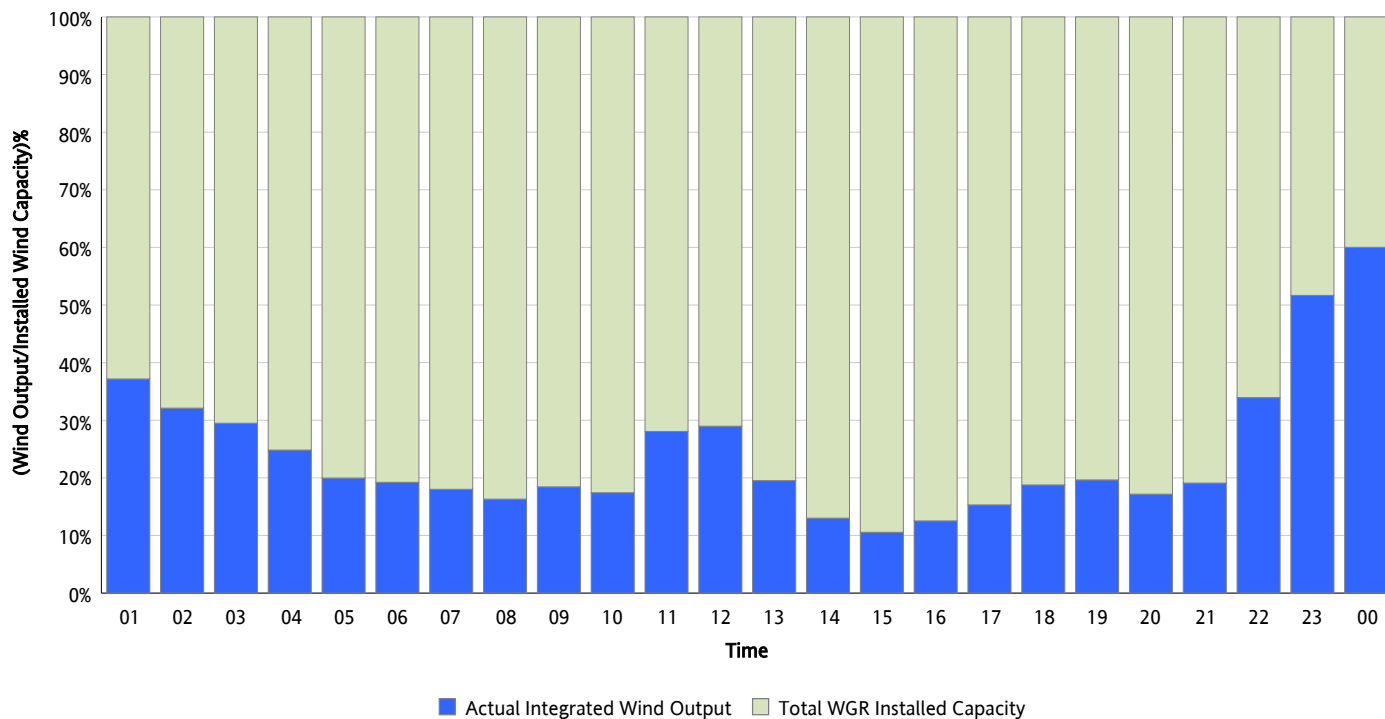
**Hourly Average Actual Load vs. Actual Wind Output**  
**03/13/2013**



\* Wind Record and Wind Max represent instantaneous values and the rest of the values are integrated over the hour

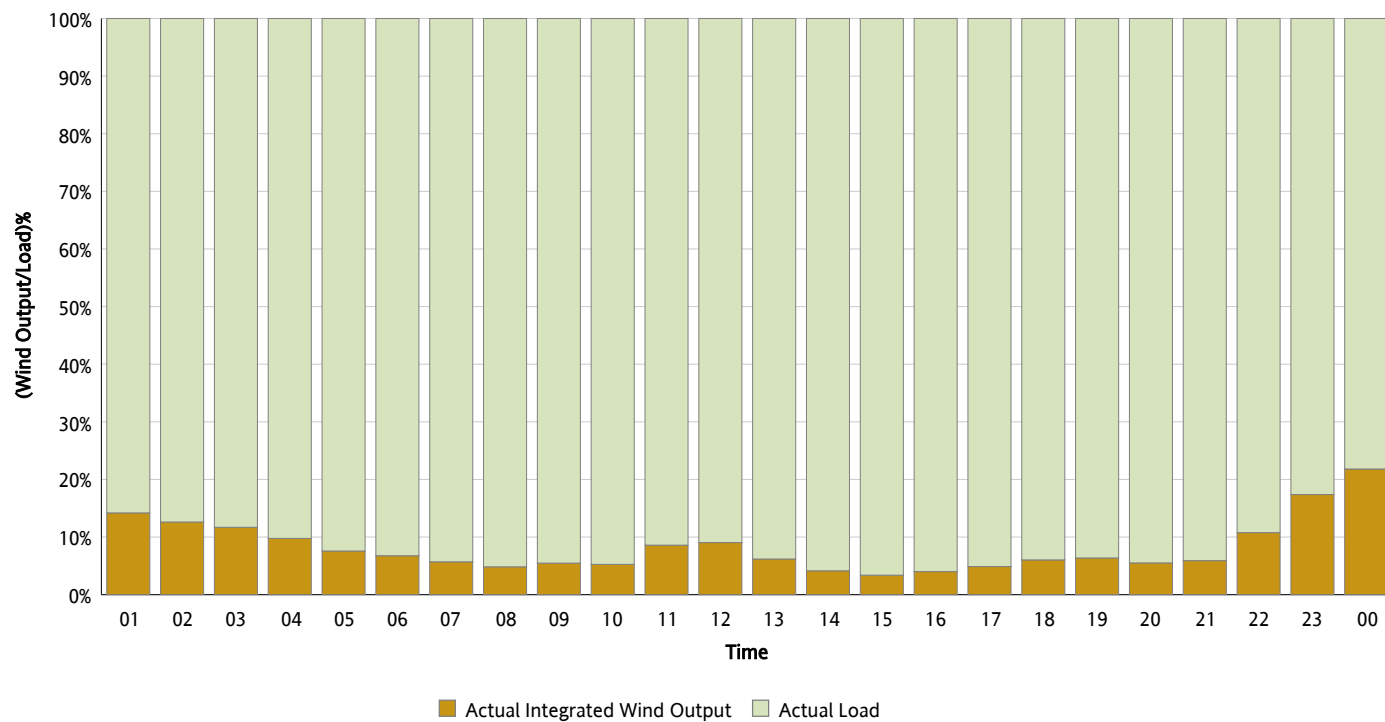
## Actual Wind Output as a Percentage of the Total Installed Wind Capacity

03/13/2013



## Actual Wind Output as a Percentage of the ERCOT Load

03/13/2013



## ERCOT Load vs. Actual Wind Output

03/06/2013 - 03/13/2013

